



Key Features

- 21.5" Intel Core i7/i5 Fanless Industrial Panel PC
- Intel 5th gen. Broadwell Core i3/i5/i7 CPU
- 21.5" LCD 16:9 Full HD 1920 x 1080 250nits
- Full flat resistive/P-cap touch with front IP66 design
- Front Panel mount housing
- CE, FCC, VCCI Class B passed
- Optional Mini-PCIe WLAN with external antenna



Main System

CPU	FCBGA1168 5th generation Intel® Core i7/i5/i3 processor (15W max.)
Chipset	SoC
VGA	Intel® integrated HD Graphics 5500 by CPU
Memory	Two 1600 MHz DDR3L SODIMM socket support dual Channel, non-ECC, up to 16GB

LCD Panel

Size	21.5" 16:9
Brightness	250 nits
Resolution	Full HD (1920 x 1080)
Color numbers	16.7 M colors
Viewing angle	R/L 170(Typ.), U/D 160(Typ)
Contrast	1000:1

Touch Panel

Technology	5-wire resistive touch (default)	Projected capacitive touch (option)
Type	Front full flat touch panel	Front full flat 4 point touch panel
Transparency	80±5%	90% ± 3%
Hardness	4H	7H
Durability	Knock 35 million times	Knock 100 million times

* OS support (Multi point) : Win 7 pro, Win 8, Win 8.1 industrial, Win10

Storage & Expansion

HDD	2.5" SATA HDD drive bay x 1 + anti-vibration kit, 500 GB
Expansion slot	Mini PCIe x 2 (52 pin card-edge type)

I/O & Power & Control Keys

USB	USB 3.0 x 2, USB 2.0 x 2
COM	DB-9 x 3 {RS232 x 2, RS232/422/485 x 1 (Set by BIOS, RS485 auto flow)}
LAN	RJ-45 x 2, Gigabit
Audio	Line-out, Microphone-in (3.5 mm phone-jack)
Video output	DP x 2
Power input	DC-in x 1, 7V~32V
Power adaptor	External, 100 watts, universal 100 ~240V AC in, 12V DC out, 8.33A
Power consumption	52.8 watts (MAX. Loading without adaptor)
Control keys	Rear bottom: Power on/off, reset

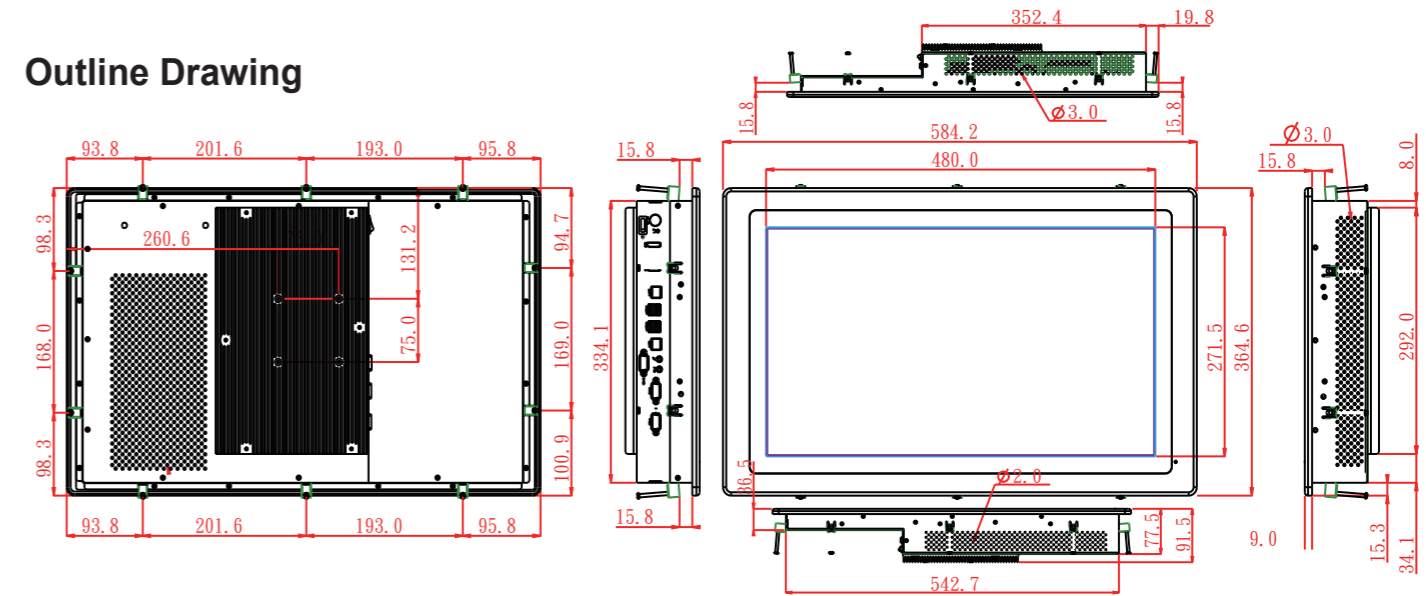
Mechanical & Environmental

Housing	Front bezel is Aluminum, others are SECC
IP rating	Front IP66
Cooling	Fanless
Dimension	584.2 x 364.6 x 91.5 mm (W x H x D, panel mount)
Weight (net)	10 Kg (approximate, w/o power adaptor)
Temperature	· Operating: 0°C~50°C (w/ air flow) / 0°C~40°C (no air flow) · Storage: -20°C~60°C
Humidity	Operating & storage – 10%~90%, non-condensing
Regulatory	FCC-B, CE (EMC), VCCI

Ordering Information

WLP-7D20-21 BKFT (i5)	R-Touch	Core i5-5200U / 4G RAM / 500G HDD
WLP-7D20-21 BKPT (i5)	P-cap Touch	Core i5-5200U / 4G RAM / 500G HDD

Outline Drawing



Options

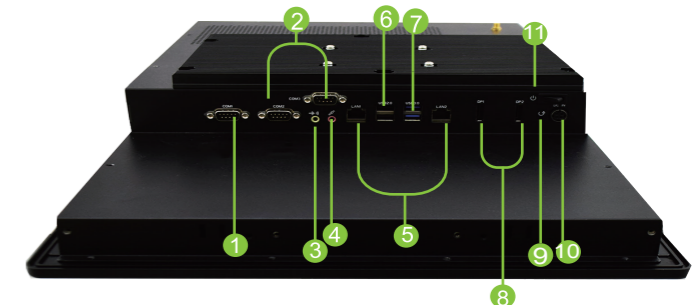
- Wireless or Wireless + BT kit (2 ant)
- mSATA module
- Change full flat resistive touch to P-cap touch (BKPT)
- 2.5" SSD
- DC input power plug (black, 1.22m length)

Customization

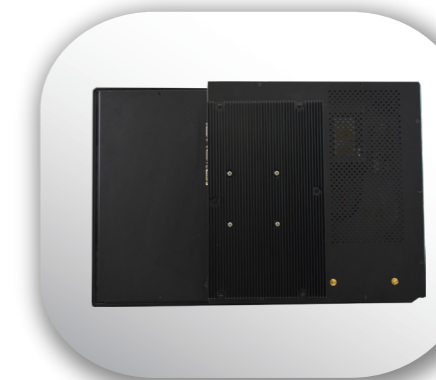
- Open frame housing
- Chassis type housing
- Storage door Solution
- Silver front bezel
- Stainless front bezel
- Change full flat resistive touch to resistive touch (BKRT)



WLP-7D20-21 CKPT



- | | |
|-----------------|----------------|
| ① RS232/422/485 | ⑥ USB 2.0 x 2 |
| ② RS232 x 2 | ⑦ USB 3.0 x 2 |
| ③ Line out | ⑧ DP x 2 |
| ④ Microphone-in | ⑨ Reset |
| ⑤ LAN x 2 | ⑩ DC-in |
| | ⑪ Power on/off |



Chassis type housing (Customization)